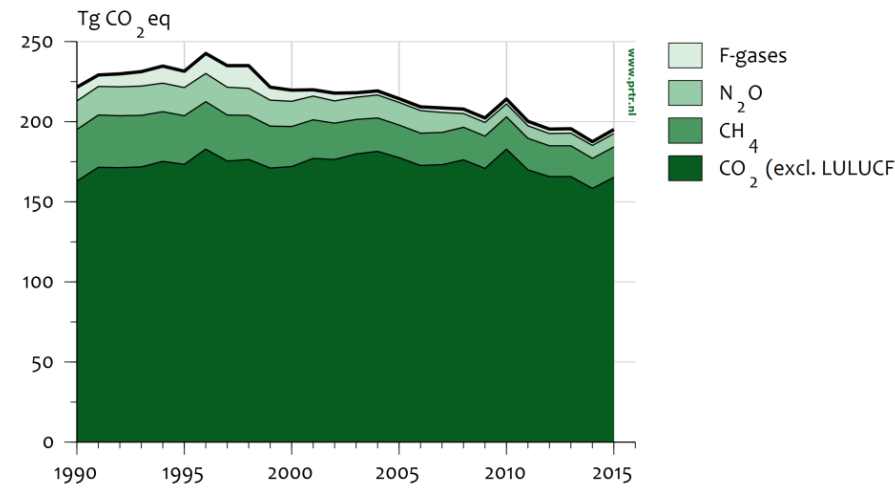




Netherlands Pollutant Release & Transfer Register

- The **official** national emissions to air, water and soil of 350 pollutants
- PRTR is a consortium led by RIVM (project coordinator Margreet van Zanten) of several institutes: PBL, CBS, Deltares, RWS, TNO, WenR, WecR
- Integral system for all international reports:
 - > Kyoto, EU/ESD -> greenhouse gasses
 - > CLRTAP and EMEP -> air quality components
- Estimated emissions in accordance with strict UN guidelines
- www.emissieregistratie.nl



Uncertainty	Prop. of error	Monte Carlo analysis
CO ₂	3%	3%
CH ₄	17%	10%
N ₂ O	41%	27%
F-gases	41%	25%
total	3%	3%



CAMS

- Link with CAMS: Emissions and surface fluxes
- Currently, CAMS products are not used due to:
 - Unfamiliarity with possibilities and options
 - Guidelines?
- Ideal cooperation? First step: combine all initiatives on this topic in The Netherlands, get to know each other (better) and start to interact more closely. Aim of cooperation would be to improve quality and to reduce uncertainties. Starting with components with largest gap between reported and satellite measured emissions.
- Role of CAMS? Continue the monitoring service, interact and stay connected with other international projects like VERIFY, ICOS, CHE; facilitate networking in the Netherlands.
- Dream? Availability of emission data set based on satellite data suitable for verification of official PRTR emissions. Ideally scientists do their work while keeping in mind the requirements PRTRs have to oblige to.