



## DCMR Milieudienst Rijnmond



# Scale issues in air quality assessment and the development of an air quality assessment tool within the CLARA project

Saskia Willers



## CLARA project

**SMHI**



- Climate Forecast Enabled Knowledge services
- Developing climate services based upon C3S
- Water management and air quality
  
- <http://www.clara-project.eu/>
  
- AirvCloud service (SMHI) built upon CAMS info of 1x1 km resolution enhance with high resolution assessment on local/street scale level
- Practical test of the service DCMR & SMHI

# Air quality assessment – scale issue



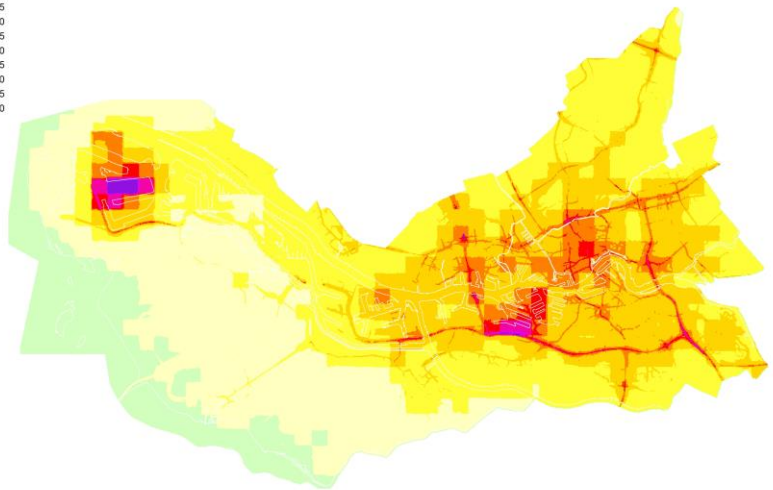
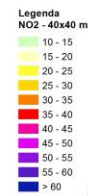
- Up until recently (NL): limit value exceedances and very high resolution modelling (100x100m or less) needed for formal assessment → CAMS information hardly useful (scale)
  - Currently: hardly any limit value exceedances left in NL:
    - Do we still need these high resolution assessments?
    - Are other scales not as / even more appropriate for (local policy making)?
    - Is CAMS information becoming more useful for local air quality assessment?
  - Question: What scale is appropriate for local policy making? For public health advisors, for urban planning?
-

# Approach

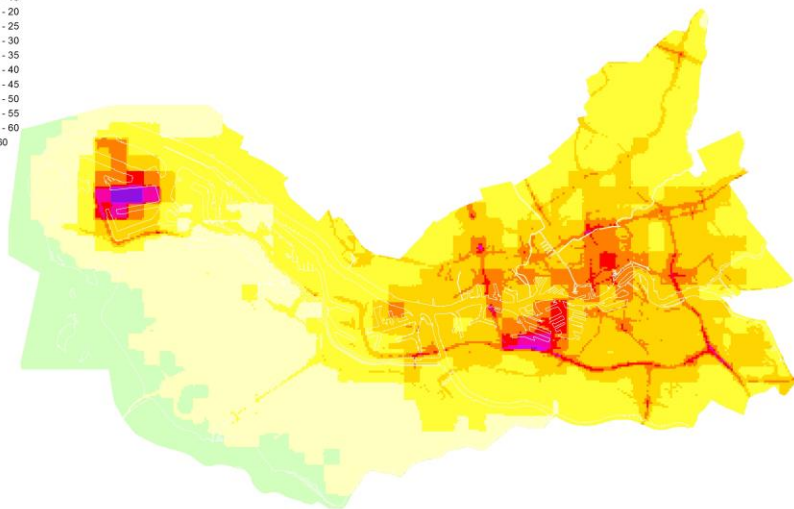
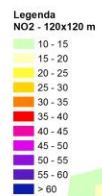


- Produce various AQ, temperature and health indicators at different resolution (from 40x40m, up to 1x1km and 5x5km)
- See how 'the message' changes when the scale changes
- Compare how exposure assessment changes (in collaboration with public health authorities/exposure scientists)
- Is spatial or temporal resolution more important?
- Are simple 'tricks' (adding spatial information - e.g. roads and their increment) sufficient to improve assessments based on 5x5 km maps?

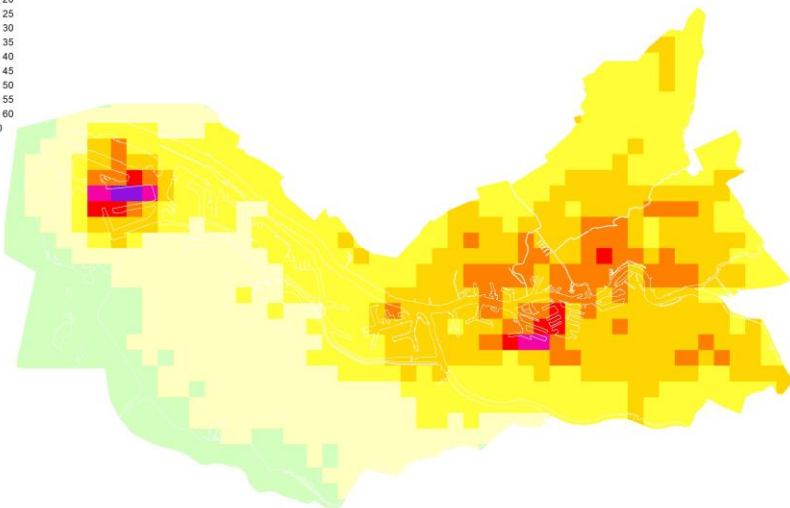




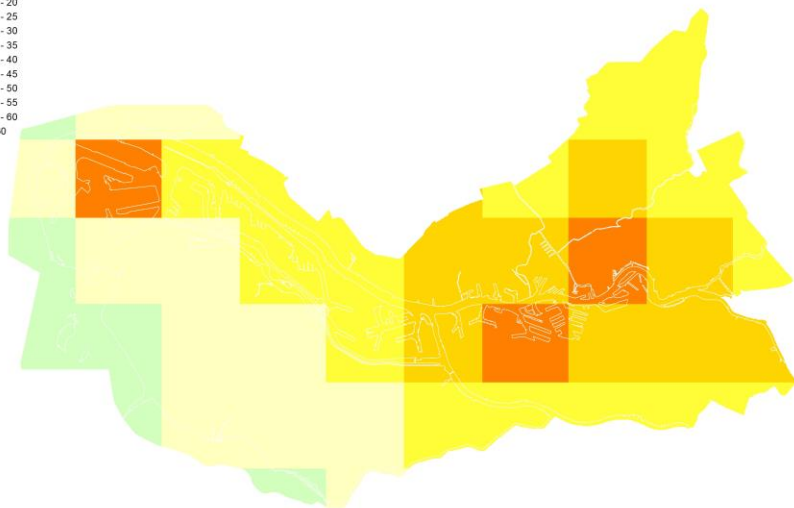
(C) DCMR Milieudienst Rijnmond - Kaartnr. 2018-EL-7/977a NO<sub>2</sub>



(C) DCMR Milieudienst Rijnmond - Kaartnr. 2018-EL-7/978b NO<sub>2</sub>



(C) DCMR Milieudienst Rijnmond - Kaartnr. 2018-EL-7/977e NO<sub>2</sub>



(C) DCMR Milieudienst Rijnmond - Kaartnr. 2018-EL-7/977f NO<sub>2</sub>



# Summary



- CLARA will provide a modelling tool with CAMS based data as background concentrations. Local sources (mainly roads) will add resolution. Developer: SMHI
- DCMR is interested in scale (spatial, temporal) what is desirable for urban planners, public health specialists, etc.

## Hypotheses:

- The detailed scale we used to work with in the Netherlands might no longer be the best scale for professionals.
- For public communication high resolution is absolutely essential.

saskia.willers@dcmr.nl

---